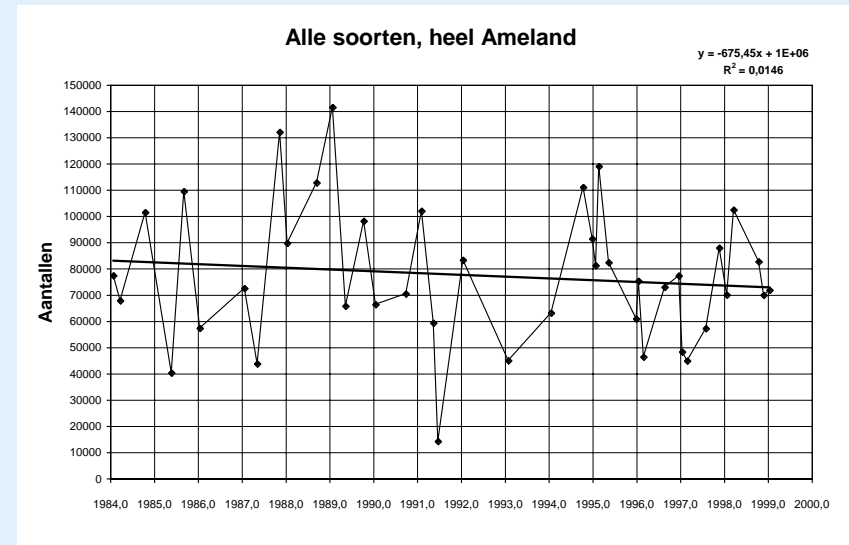
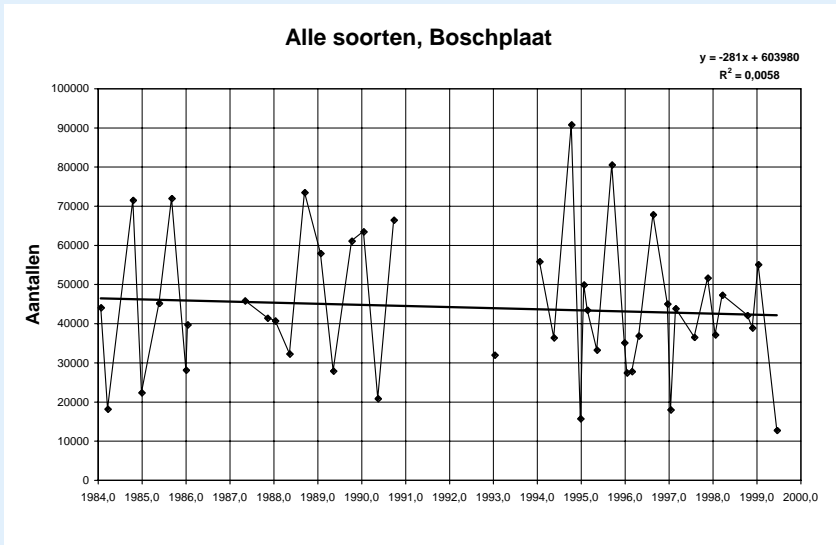




Appendix 2 Grafieken aantallen trekvogels in de periode 1984 - 1999

Onder elkaar staan steeds de aantallen van DE BOSCHPLAAT (Terschelling), HEEL AMELAND (inclusief oost Ameland, het NEERLANDS REID, DE HON en de ENGELSMANPLAAT.

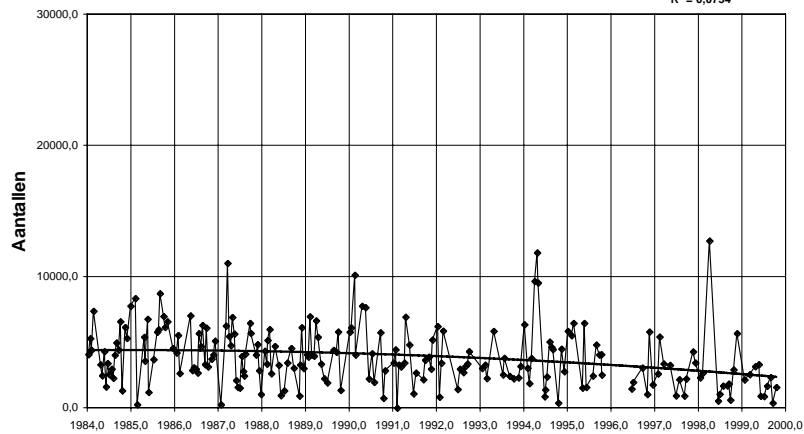
Voor de vogelsoorten apart is per soort zoveel mogelijk de zelfde schaal aangehouden. Waar dat niet mogelijk was in verband met de leesbaarheid is dat aangegeven door middel van een afwijkend horizontaal raster.





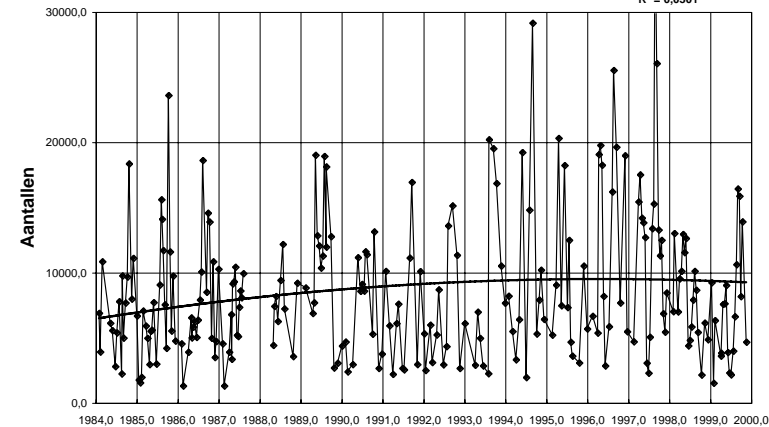
Alle soorten, Neerlands Reid

$$y = -9,2889x^2 + 36876x - 4E+07$$
$$R^2 = 0,0734$$



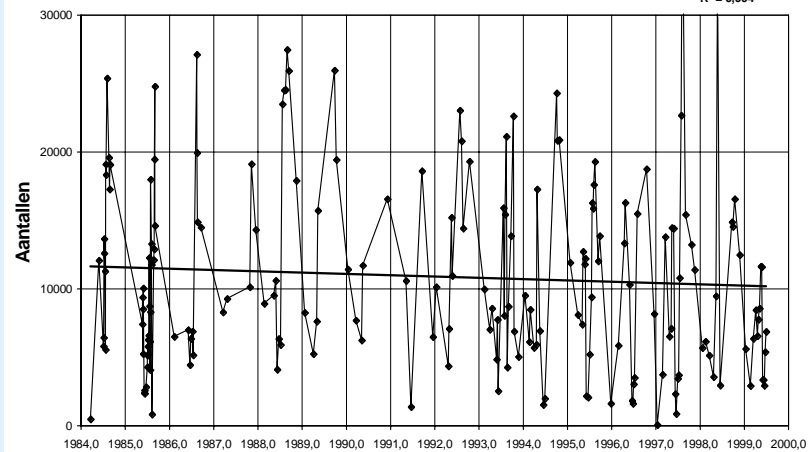
Alle soorten, De Hon

$$y = -20,123x^2 + 80342x - 8E+07$$
$$R^2 = 0,0301$$



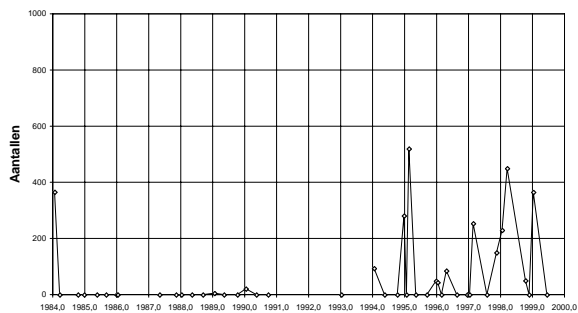
Alle soorten, Engelsmanplaat

$$y = -94,851x + 199853$$
$$R^2 = 0,004$$

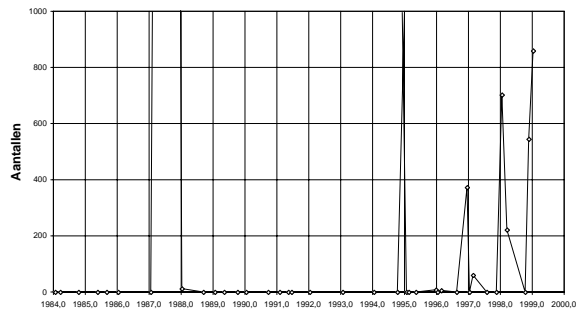




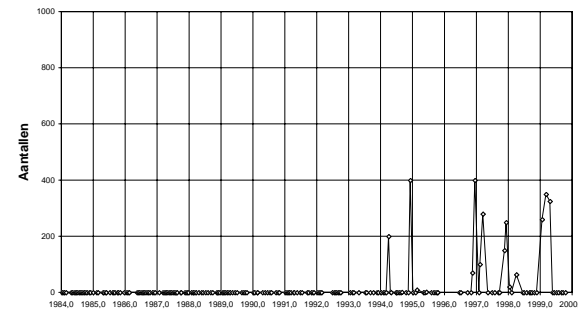
Brandgans, Boschplaat



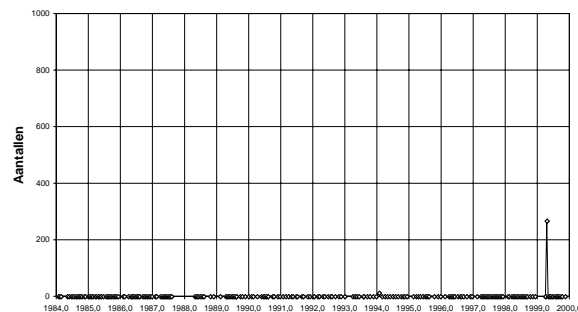
Brandgans, heel Ameland



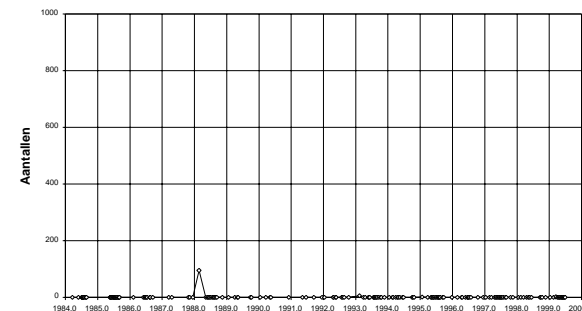
Brandgans, Neerlands Reid



Brandgans, de Hon



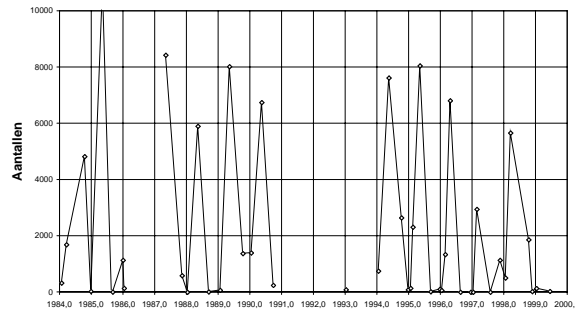
Brandgans, Engelsmanplaat



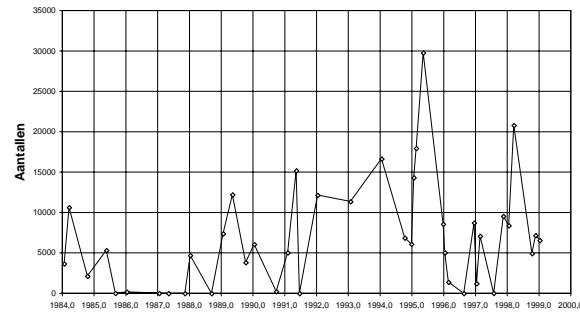
Brandgans



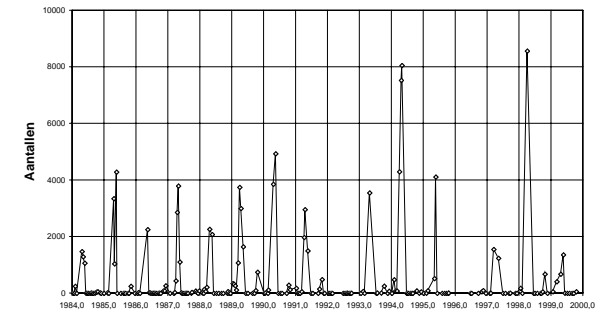
Rotgans, Boschplaat



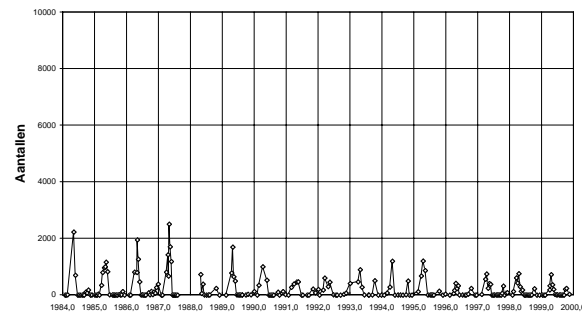
Rotgans, heel Ameland



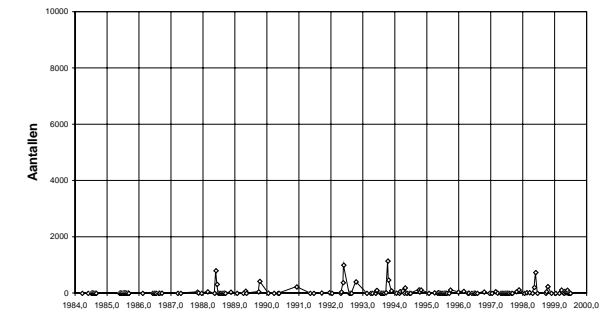
Rotgans, Neerlands Reid



Rotgans, De Hon



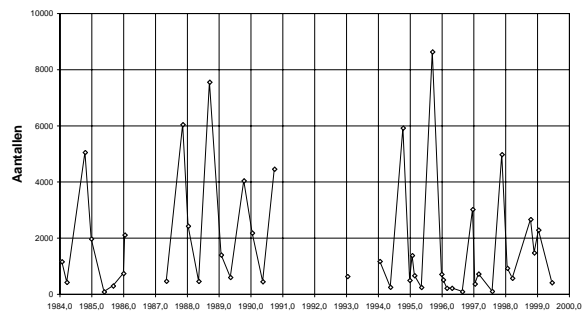
Rotgans, Engelsmanplaat



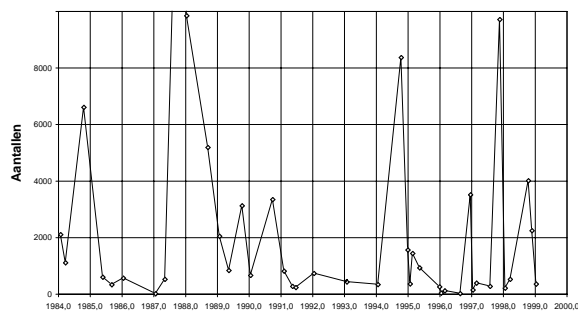
Rotgans



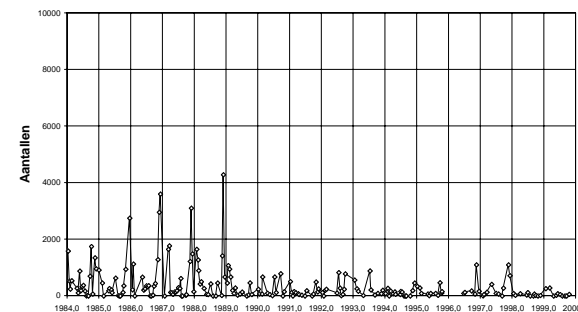
Bergeend, Boschplaat



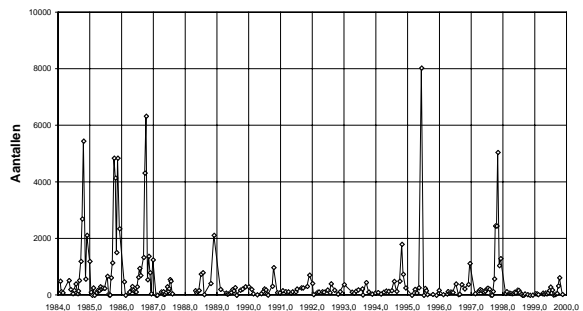
Bergeend, heel Ameland



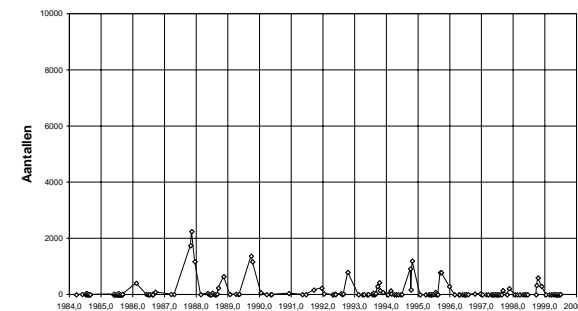
Bergeend, Neerlands Reid



Bergeend, De Hon



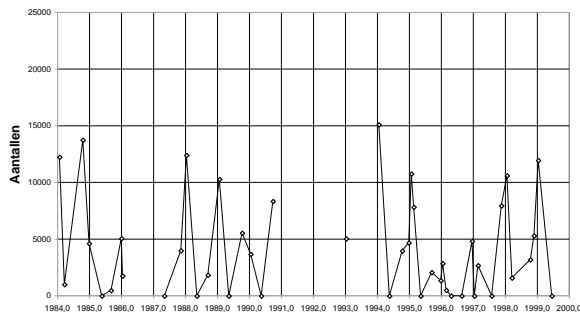
Bergeend, Engelsmanplaat



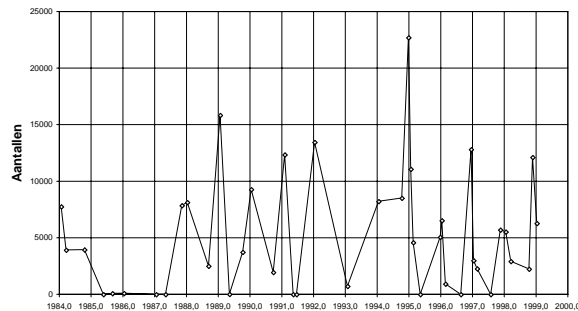
Bergeend



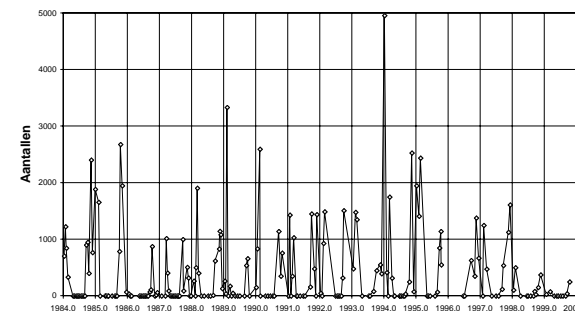
Smient, Boschplaat



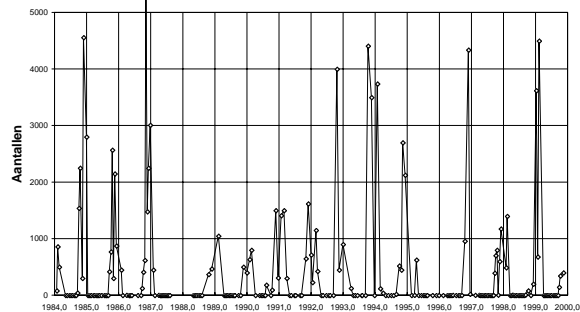
Smient, heel Ameland



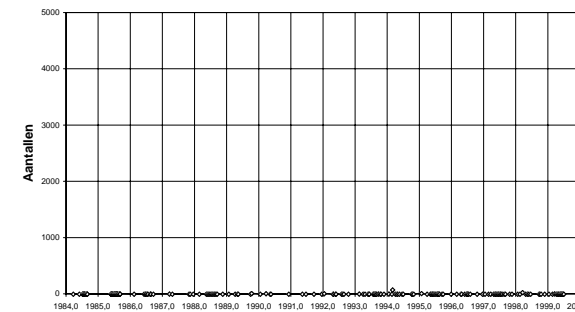
Smient, Neerlands Reid



Smient, De Hon



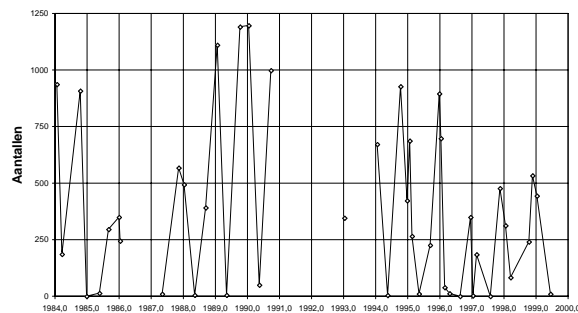
Smient, Engelsmanplaat



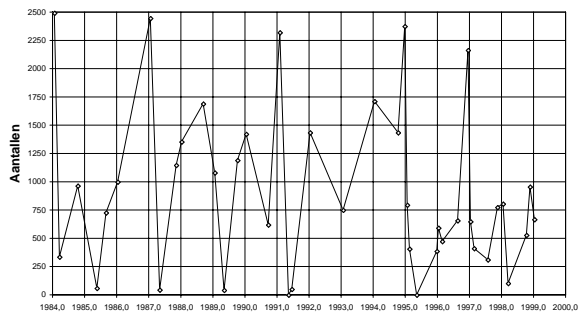
Smient



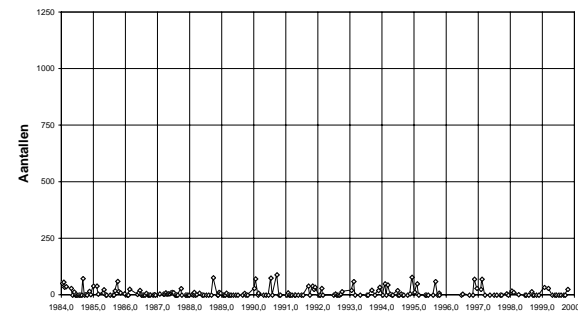
Wilde eend, Boschplaat



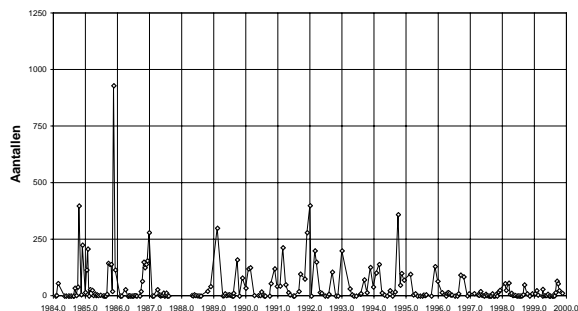
Wilde eend, heel Ameland



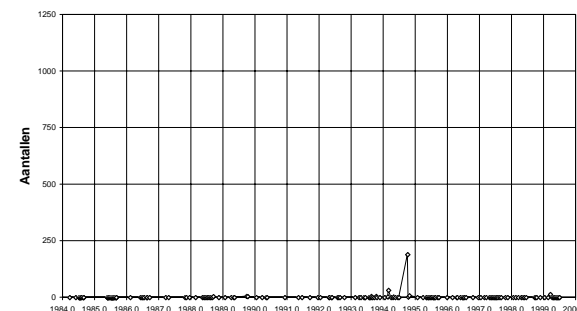
Wilde eend, Neerlands Reid



Wilde eend, De Hon



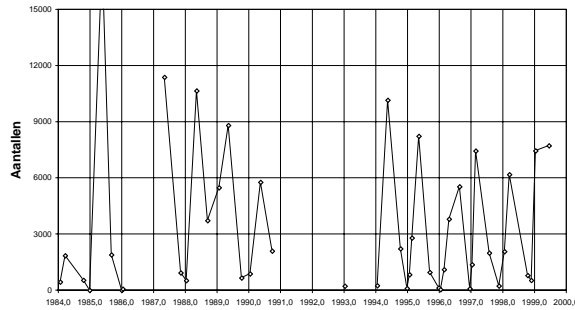
Wilde eend, Engelsmanplaat



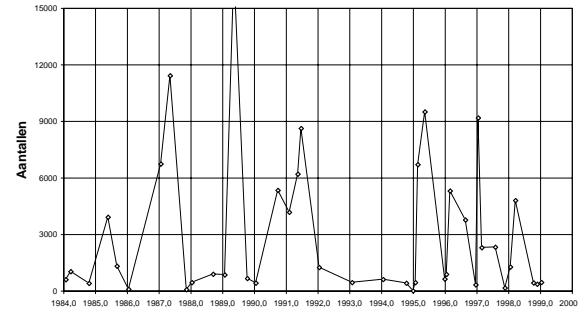
Wilde eend



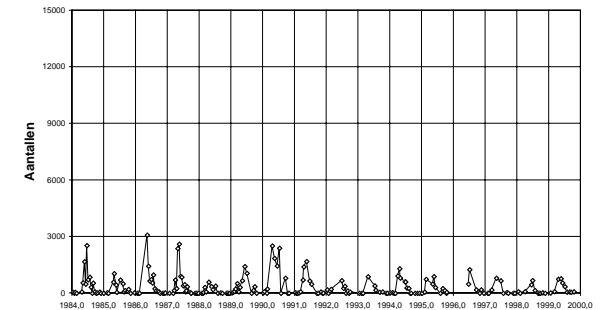
Eidereend, Boschplaat



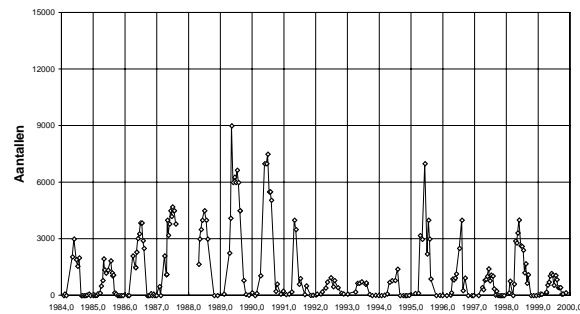
Eidereend, heel Ameland



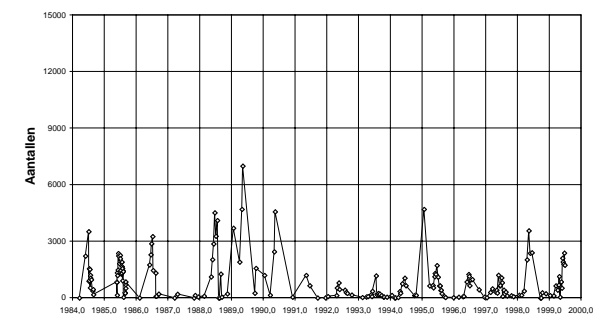
Eidereend, Neerlands Reid



Eidereend, De Hon



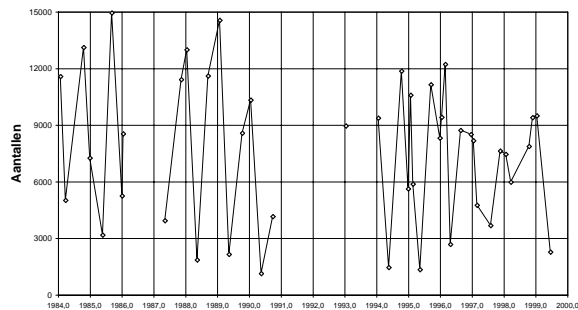
Eidereend, Engelsmanplaat



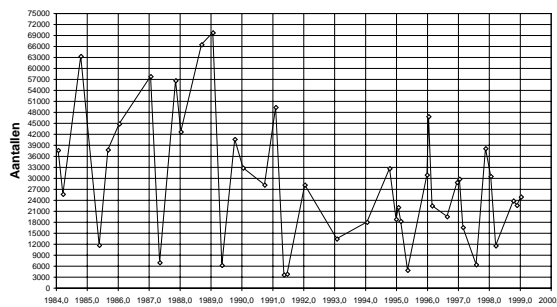
Eidereend



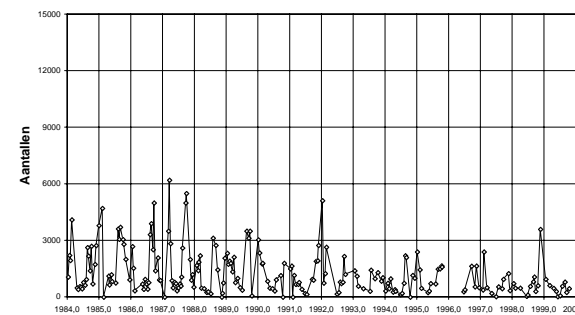
Scholekster, Boschplaat



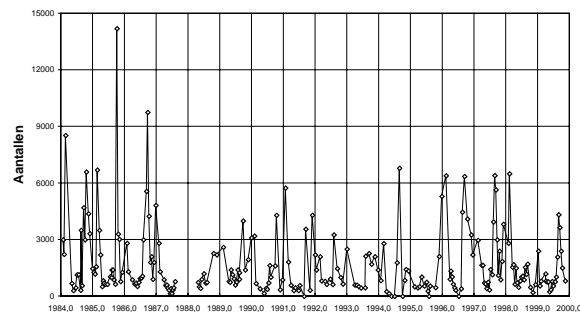
Scholekster, heel Ameland



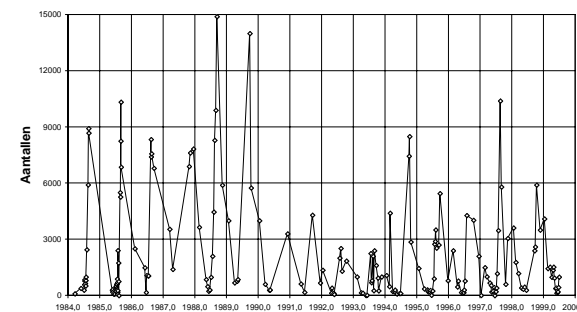
Scholekster, Neerlands Reid



Scholekster, De Hon



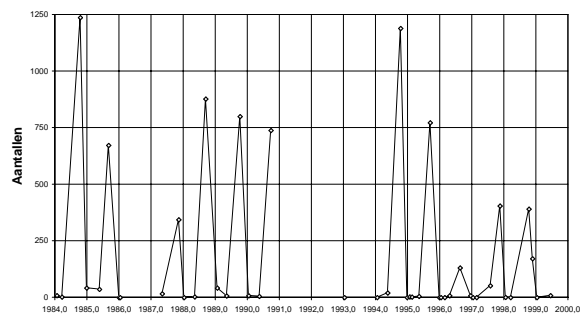
Scholekster, Engelsmanplaat



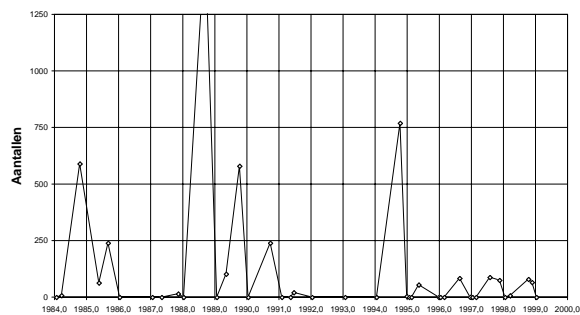
Scholekster



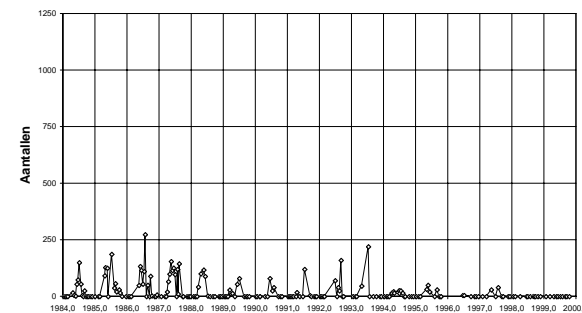
Kluut, Boschplaat



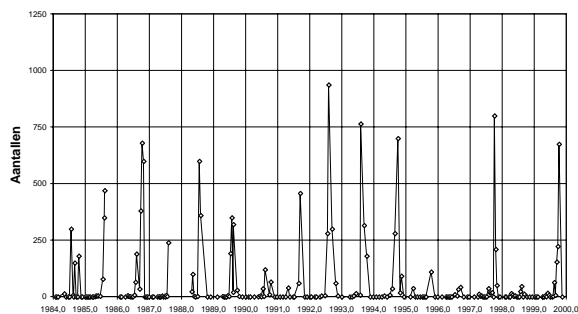
Kluut, heel Ameland



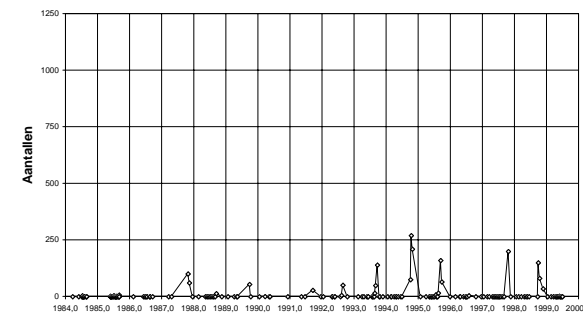
Kluut, Neerlands Reid



Kluut, De Hon



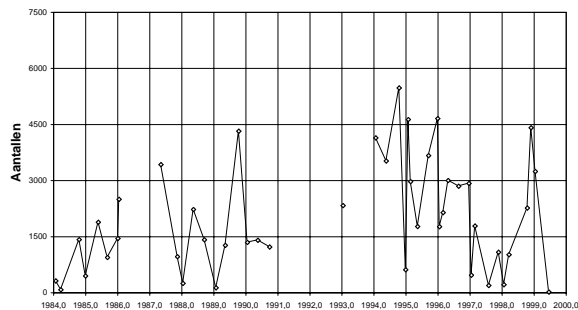
Kluut, Engelsmanplaat



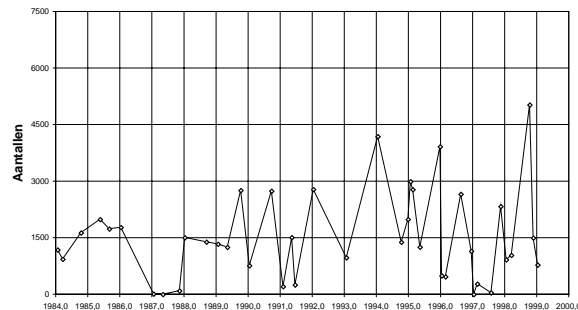
Kluut



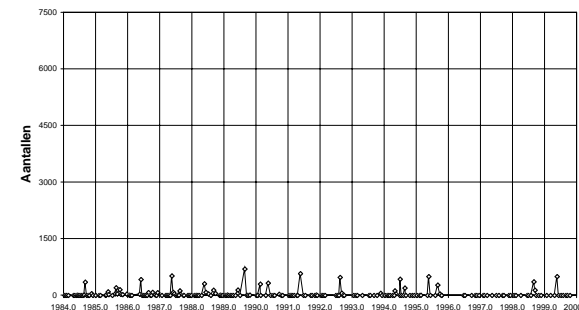
Zilverplevier, Boschplaat



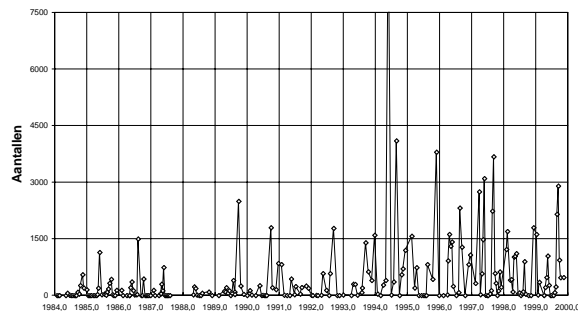
Zilverplevier, heel Ameland



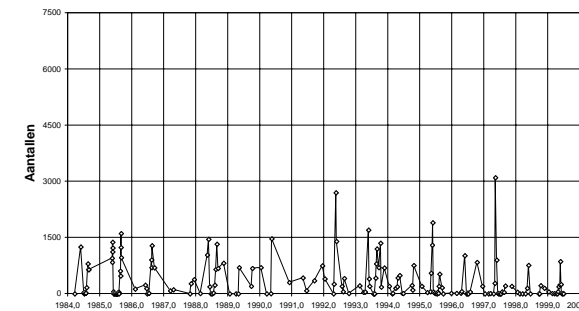
Zilverplevier, Neerlands Reid



Zilverplevier, De Hon



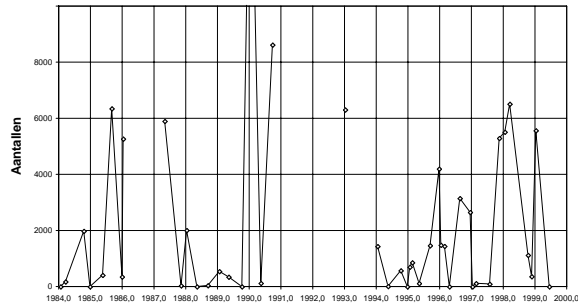
Zilverplevier, Engelsmanplaat



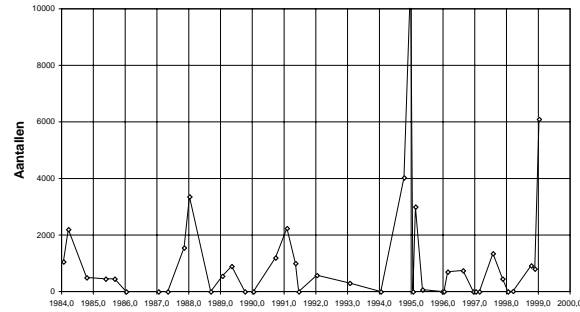
Zilverplevier



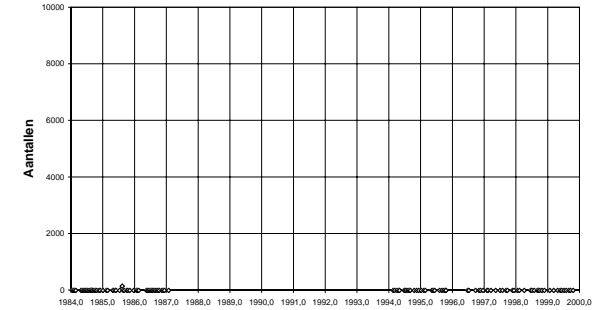
Kanoetstrandloper, Boschplaat



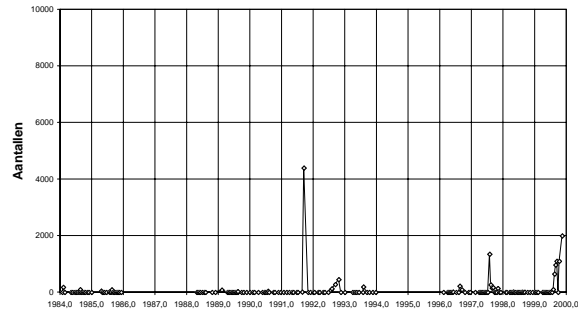
Kanoet, heel Ameland



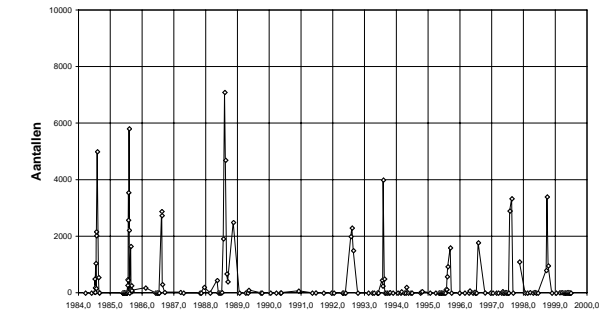
Kanoetstrandloper, Neerlands reid



Kanoetstrandloper, De Hon



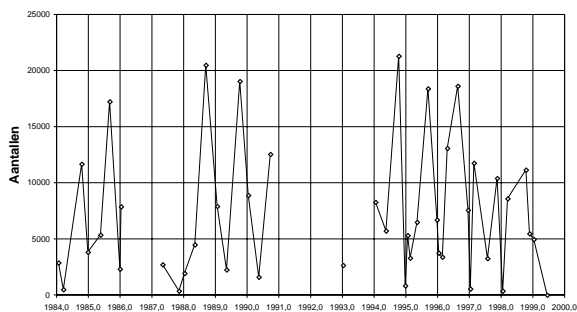
Kanoetstrandloper, Engelsmanplaat



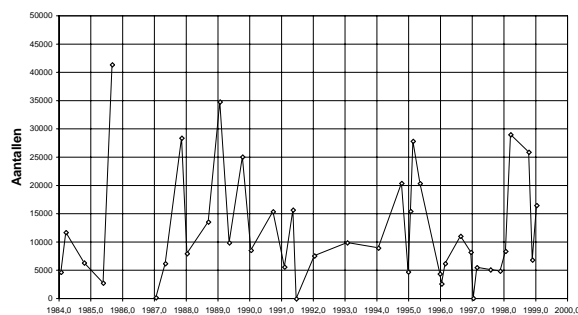
Kanoetstrandloper



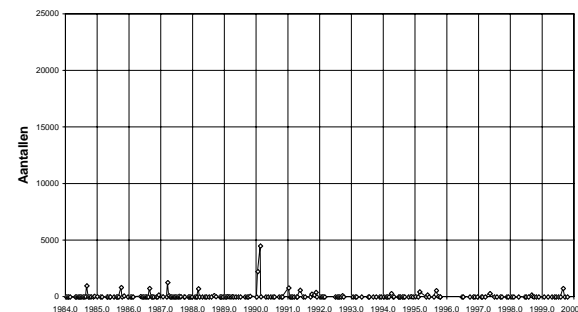
Bonte strandloper, Boschplaat



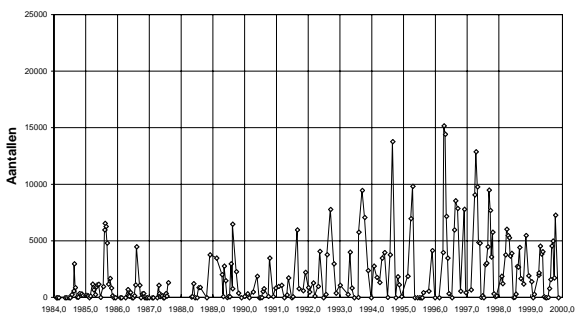
Bonte strandloper, heel Ameland



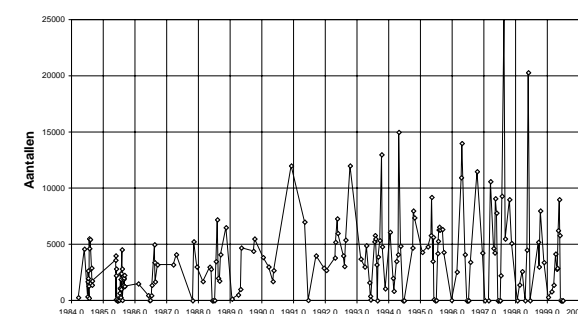
Bonte strandloper, Neerlands Reid



Bonte strandloper, De Hon



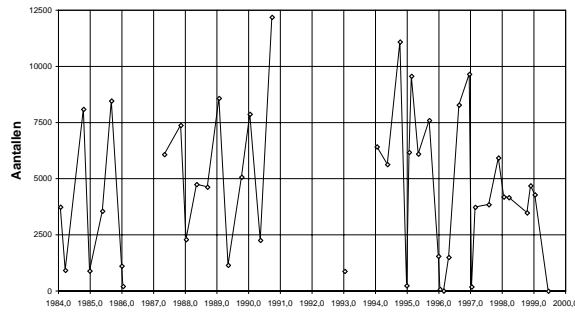
Bonte strandloper, Engelsmanplaat



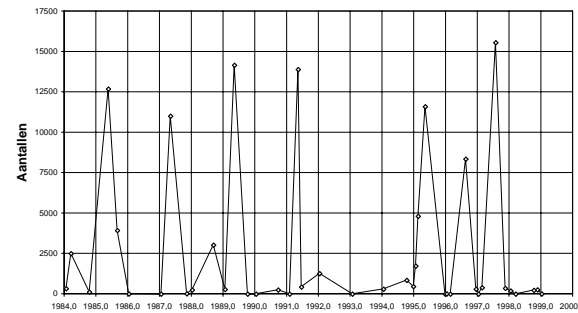
Bonte strandloper



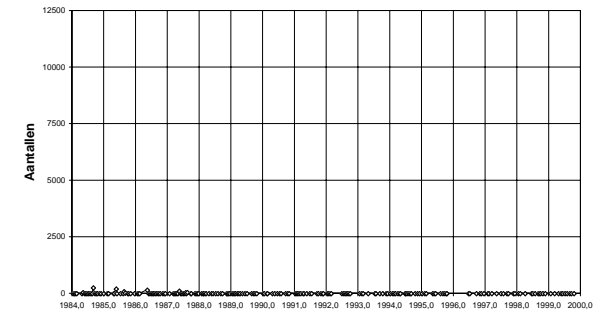
Rosse grutto, Boschplaat



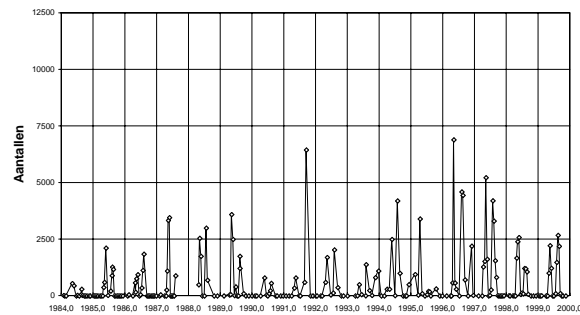
Rosse grutto, heel Ameland



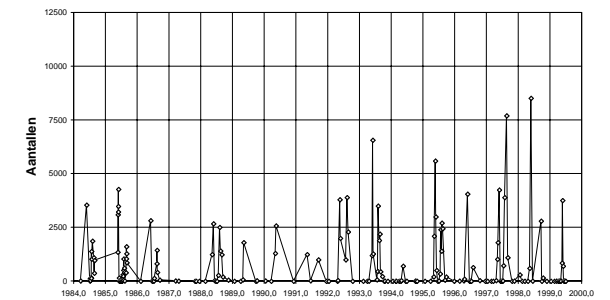
Rosse grutto, Neerlands Reid



Rosse grutto, De Hon



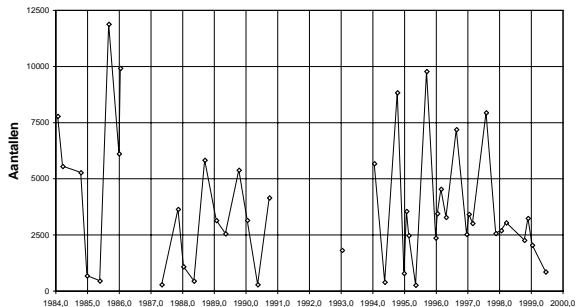
Rosse grutto, Engelsmanplaat



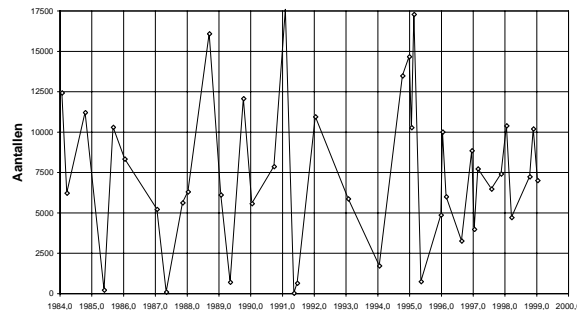
Rosse grutto



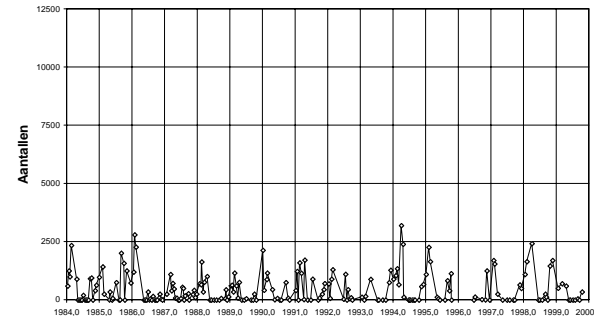
Wulp, Boschplaat



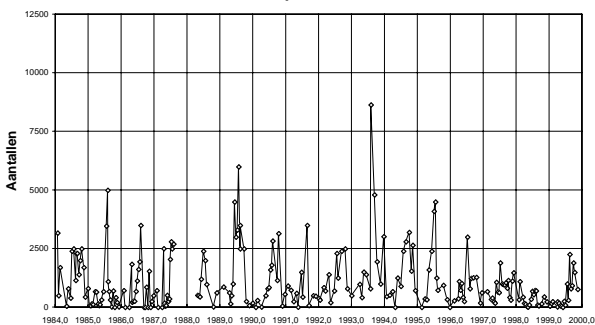
Wulp, heel Ameland



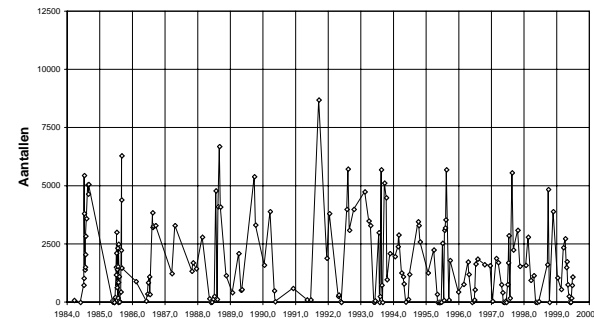
Wulp, Neerlands Reid



Wulp, De Hon



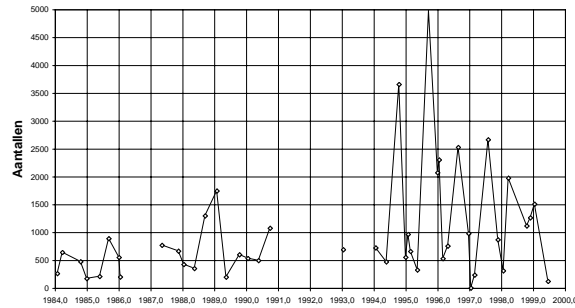
Wulp, Engelsmanplaat



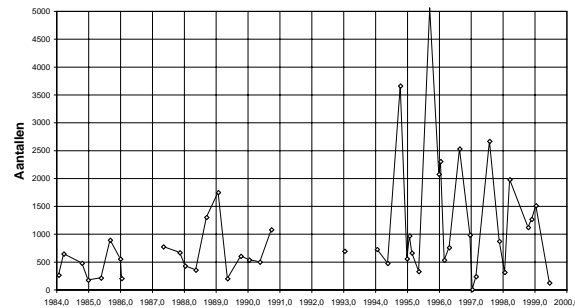
Wulp



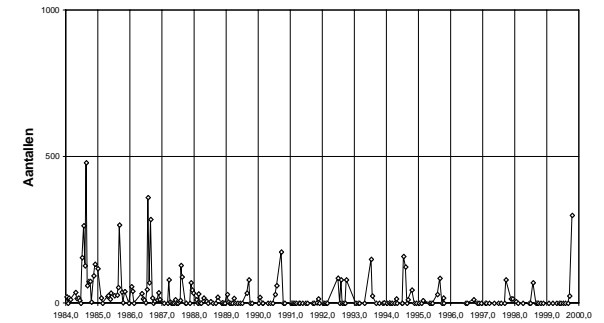
Tureluur, Boschplaat



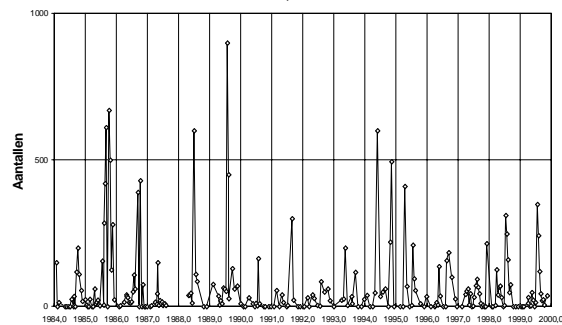
Tureluur, Boschplaat



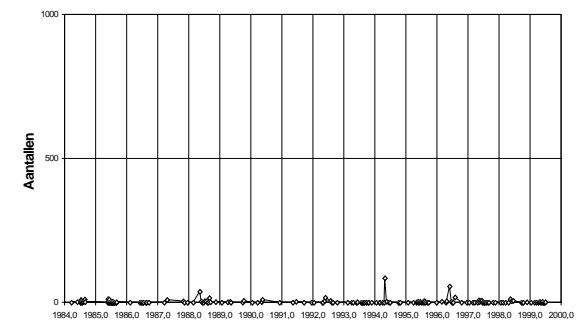
Tureluur, Neerlands Reid



Tureluur, De Hon



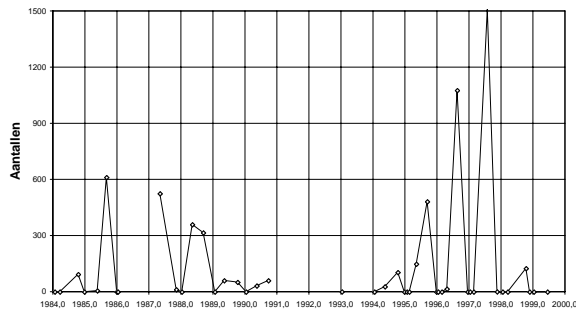
Tureluur, Engelsmanplaat



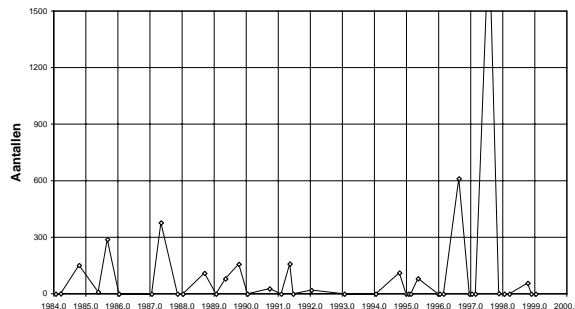
Tureluur



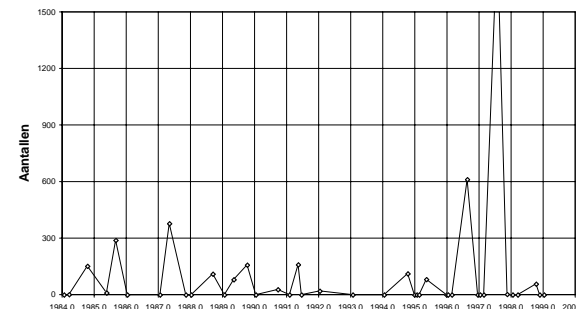
Groenpootruiter, Boschplaat



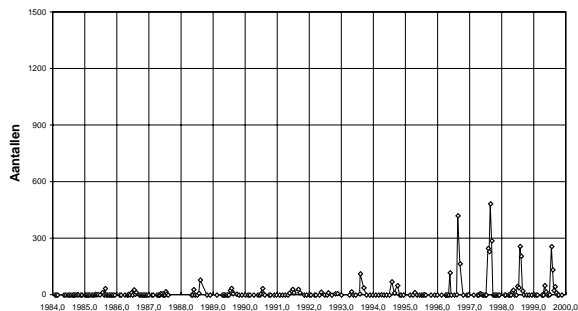
Groenpootruiter, heel Ameland



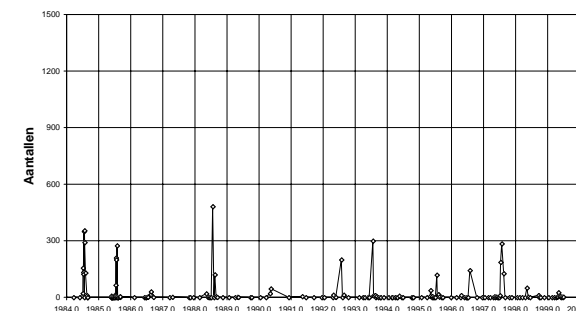
Groenpootruiter, heel Ameland



Groenpootruiter, De Hon



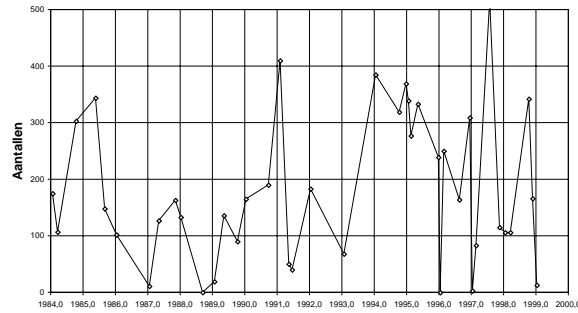
Groenpootruiter, Engelsmanplaat



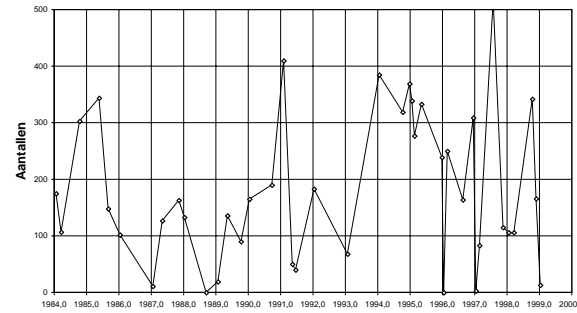
Groenpootruiter



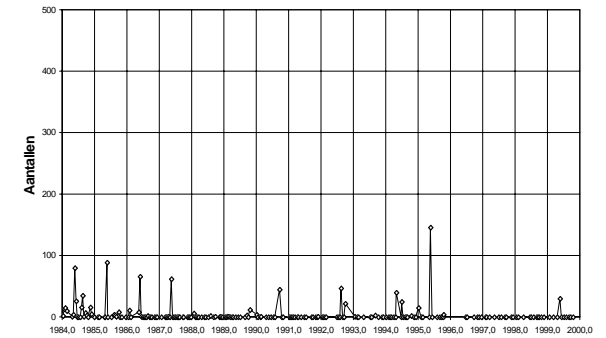
Steenloper, heel Ameland



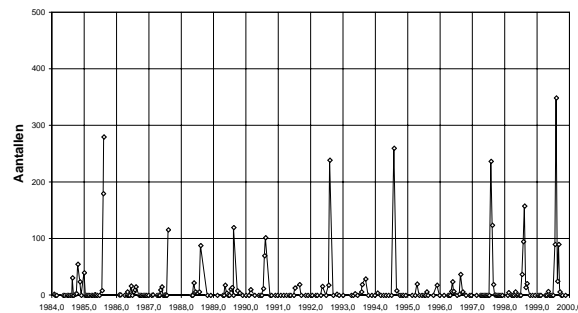
Steenloper, heel Ameland



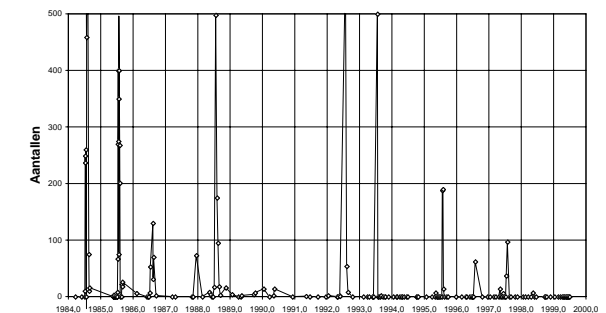
Steenloper, Neerlands Reid



Steenloper, De Hon



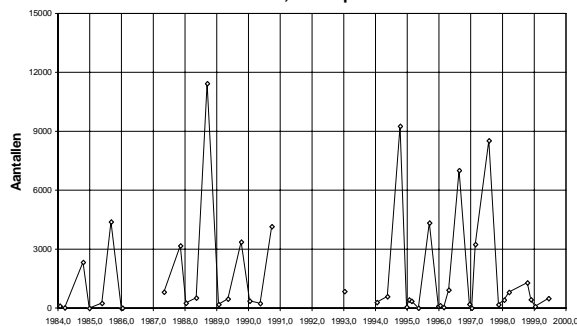
Steenloper, Engelsmanplaat



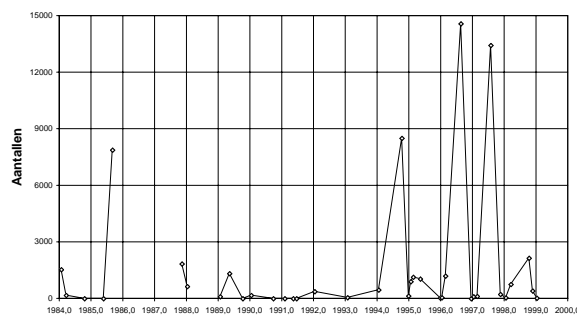
Steenloper



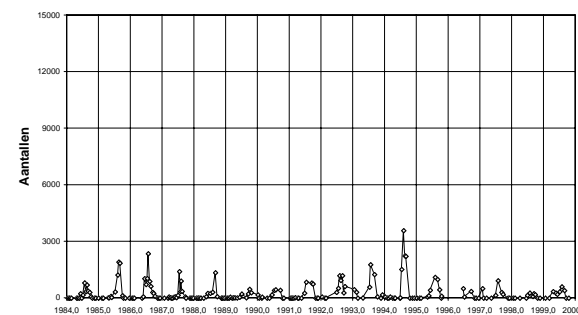
Kokmeeuw, Boschplaat



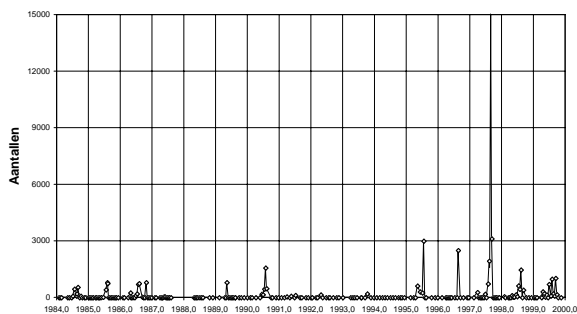
Kokmeeuw, heel Ameland



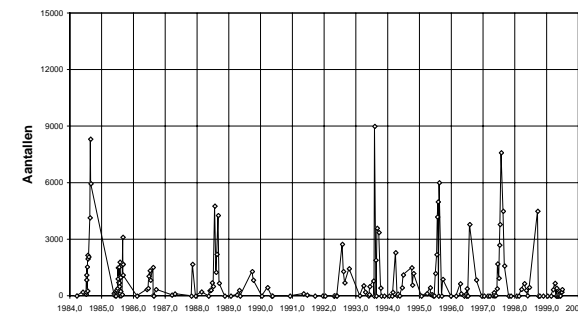
Kokmeeuw, Neerlands Reid



Kokmeeuw, De Hon



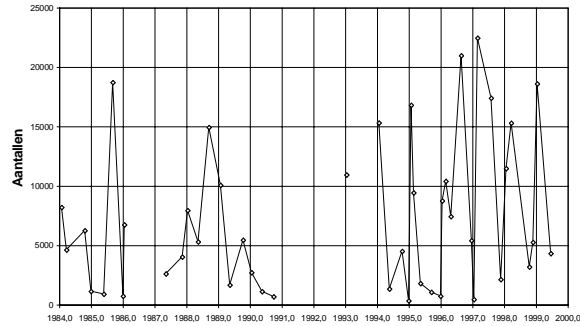
Kokmeeuw, Engelsmanplaat



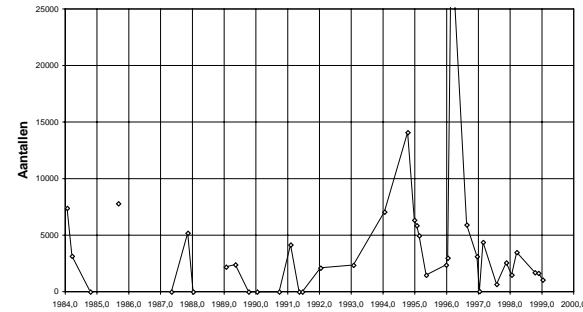
Kokmeeuw



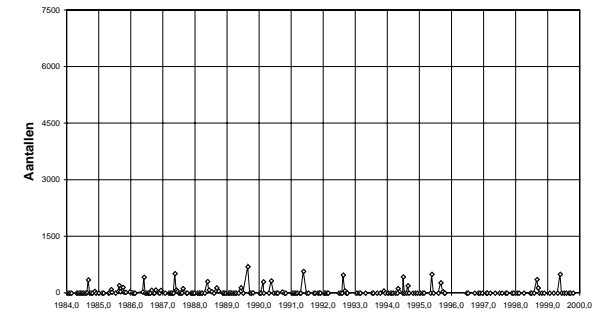
Zilvermeeuw, Boschplaat



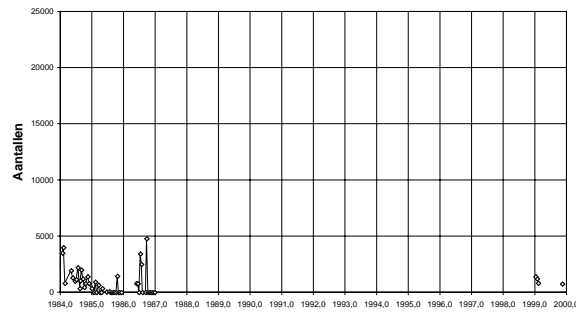
Zilvermeeuw, heel Ameland



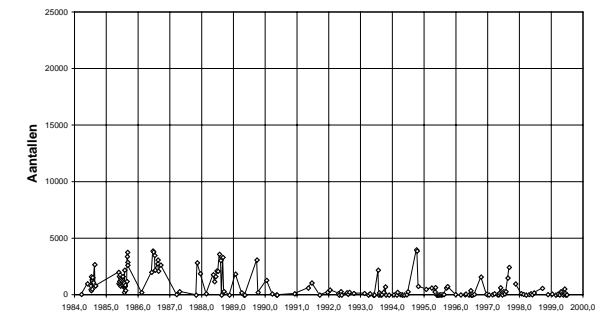
Zilverplevier, Neerlands Reid



Zilvermeeuw, De Hon



Zilvermeeuw, Engelsmanplaat



Zilvermeeuw

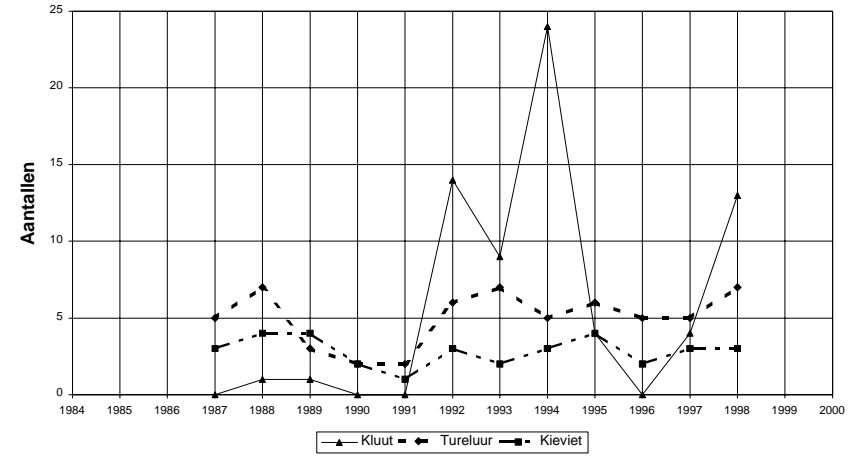


Grafieken aantallen broedende vogels

Scholekster en Eidereend, broedend



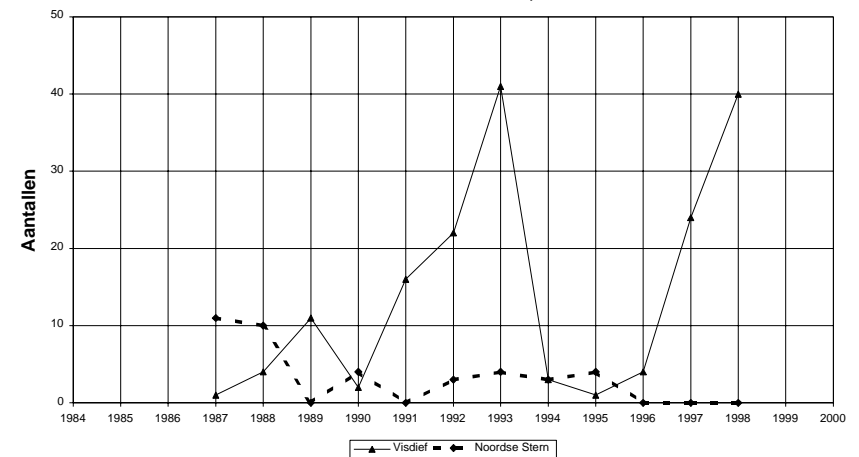
Kluut, Tureluur en Kieviet, broedend op De Hon



Kokmeeuw, broedend



Visdief en Noordse stern, broedend





Veldleeuwerik en Graspieper, broedend op De Hon

